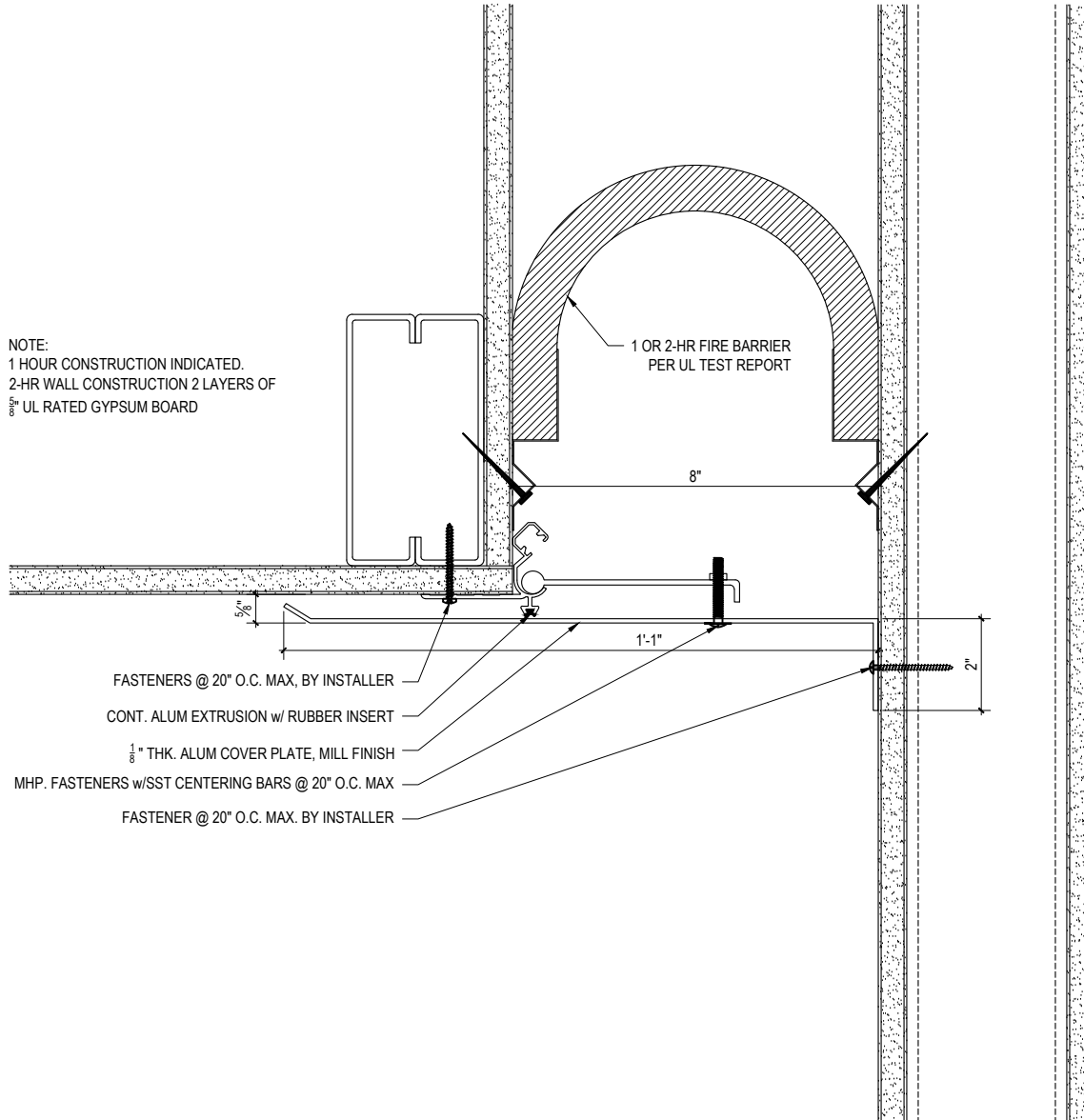


NOTE:  
 1 HOUR CONSTRUCTION INDICATED.  
 2-HR WALL CONSTRUCTION 2 LAYERS OF  
 5/8" UL RATED GYPSUM BOARD



- FASTENERS @ 20" O.C. MAX, BY INSTALLER
- CONT. ALUM EXTRUSION w/ RUBBER INSERT
- 1/8" THK. ALUM COVER PLATE, MILL FINISH
- MHP. FASTENERS w/SST CENTERING BARS @ 20" O.C. MAX
- FASTENER @ 20" O.C. MAX. BY INSTALLER

SCALE: 3"=1'-0"



**M.H. POWELL & CO., INC.**  
 ARCHITECTURAL SEISMIC EXPANSION JOINT SYSTEMS

2313 YATES AVENUE | PHONE : (323) 887-0037  
 COMMERCE, CA 90040 | FAX : (323) 887-0877  
 WEB : www.mhpowell.net

**MODEL  
 WSL-8**

WALL/CEILING CORNER CONDITION  
 FIRE RATED

PROJECT : \_\_\_\_\_ PROJECT # : \_\_\_\_\_  
 LOCATION : \_\_\_\_\_ DATE : \_\_\_\_\_  
 ARCHITECT : \_\_\_\_\_  
 CUSTOMER : \_\_\_\_\_

PAGE #